

# ALSTON BAR & BEEF

## SET MENU

1 COURSE FOR £12 / 2 COURSES FOR £15 / 3 COURSES FOR £18

### STARTERS

#### LAMB ARANCINI

CHICKPEA, SPINACH & RAISIN

#### PAN SEARED MACKEREL

ORANGE & OLIVE SALSA

#### CRISPY CHILLI FETA

HERITAGE TOMATOES, WATERCRESS VERDE

### MAINS

#### SPICED CHICKEN BREAST

POMEGRANATE SALAD, LIME YOGHURT,  
CRUSHED PISTACHIO

#### PAUPIETTE OF PLAICE

CHERRY TOMATOES & SPINACH, SAUCE VIN BLANC

#### RICOTTA & PEA RIGATONI

TOASTED ALMONDS & HERB CRUMB

### STEAK

#### TWEED VALLEY 250G FLAT IRON

FRIES, GARLIC BUTTER

#### TWEED VALLEY 250G D-RUMP

FRIES, GARLIC BUTTER

(£3 SUPPLEMENT)

### SIDES

(£4 EACH)

#### CAJUN SWEET POTATO FRIES

#### STEM BROCCOLI WITH CHILLI & ALMONDS

#### HOUSE SALAD

#### BATTERED ONIONS

### DESSERTS

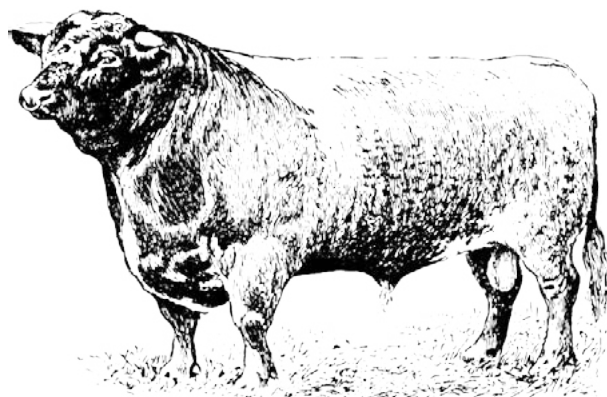
#### COFFEE CHOCOLATE BROWNIE

WARM CHOCOLATE SAUCE, VANILLA ICE CREAM

#### PEAR CRUMBLE

PEAR GEL, TOASTED OAT'S, VANILLA ICE CREAM

#### TRIO OF ICE CREAM





PLAN  
of the City of  
GLASGOW.  
1783.

# ALSTON BAR & BEEF

ALSTON STREET WAS A BUSTLING THOROUGHFARE THAT CONNECTED ARGYLE STREET WITH GORDON STREET UNTIL THE MID-1870S WHEN ALL THE BUILDINGS WERE DEMOLISHED TO MAKE WAY FOR THE FIRST PHASE OF CENTRAL STATION.

IT RAN NORTH TO SOUTH THROUGH GRAHAMSTON, AN IMPORTANT LOCATION FOR GLASGOW'S GROWING INTERNATIONAL TRADE, PROVIDING PREMISES FOR PROCESSING AND STORING GOODS FOR DESPATCH TO COUNTRIES AROUND THE WORLD. THERE WERE SEVERAL LARGE WAREHOUSES AND A SUGAR REFINERY, SURROUNDED BY CARTERS' YARDS, TENEMENT DWELLINGS AND VILLAS.

THE 'FIRST THEATRE IN GLASGOW' OPENED IN ALSTON STREET IN 1764. IN FACT IT WAS NOT LOCATED IN GLASGOW BUT IN GRAHAMSTON, JUST A FEW YARDS OUTSIDE THE CITY BOUNDARY, BECAUSE THE CITY AND CHURCH ELDERS WOULD NOT ALLOW THE 'HOUSE OF THE DEVIL' TO BE OPENED WITHIN THE CITY.

ALSTON BAR & BEEF IS LOCATED JUST UNDER THE NORTH END OF THE ORIGINAL ALSTON STREET AND WE HOPE THAT CUSTOMERS WILL TAKE AN INTEREST IN THE STORY OF GRAHAMSTON, GLASGOW'S FORGOTTEN VILLAGE.



[ALSTONGLASGOW.CO.UK](http://ALSTONGLASGOW.CO.UK)

CENTRAL STATION | 79 GORDON STREET | GLASGOW, G1 3SQ  
0141 221 7627 | [INFO@ALSTONGLASGOW.CO.UK](mailto:INFO@ALSTONGLASGOW.CO.UK)